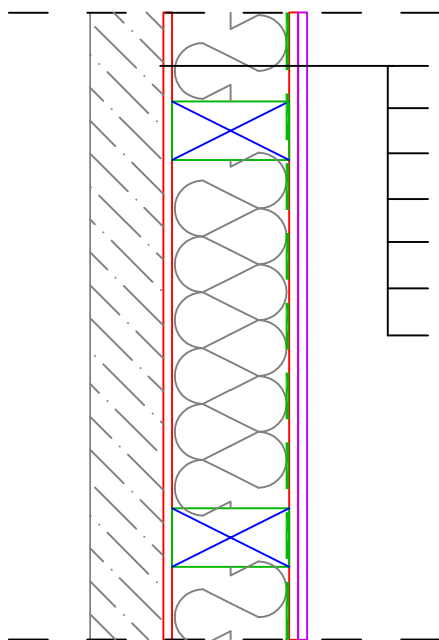
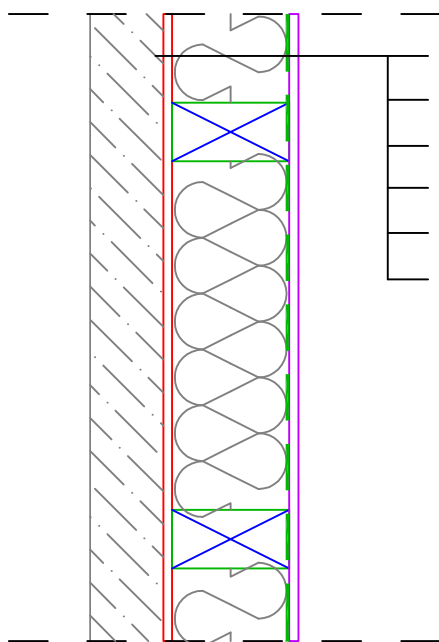


PRIMERI FASADNIH ZIDOVA



završna obrada fasade	0.5 cm
stiropor.....	10.0 cm
OSB ploča.....	1.2 cm
konstrukcija/izolaciona vuna	16.0 cm
parna brana.....	0.2 cm
OSB ploča.....	1.2 cm
gips-karton ploča.....	1.25 cm
$\Sigma=$	<u>30.4 cm</u>



završna obrada fasade	0.5 cm
stiropor.....	10.0 cm
OSB ploča.....	1.2 cm
konstrukcija/izolaciona vuna	16.0 cm
parna brana.....	0.2 cm
gips-karton ploča.....	1.25 cm
$\Sigma=$	<u>29.1 cm</u>